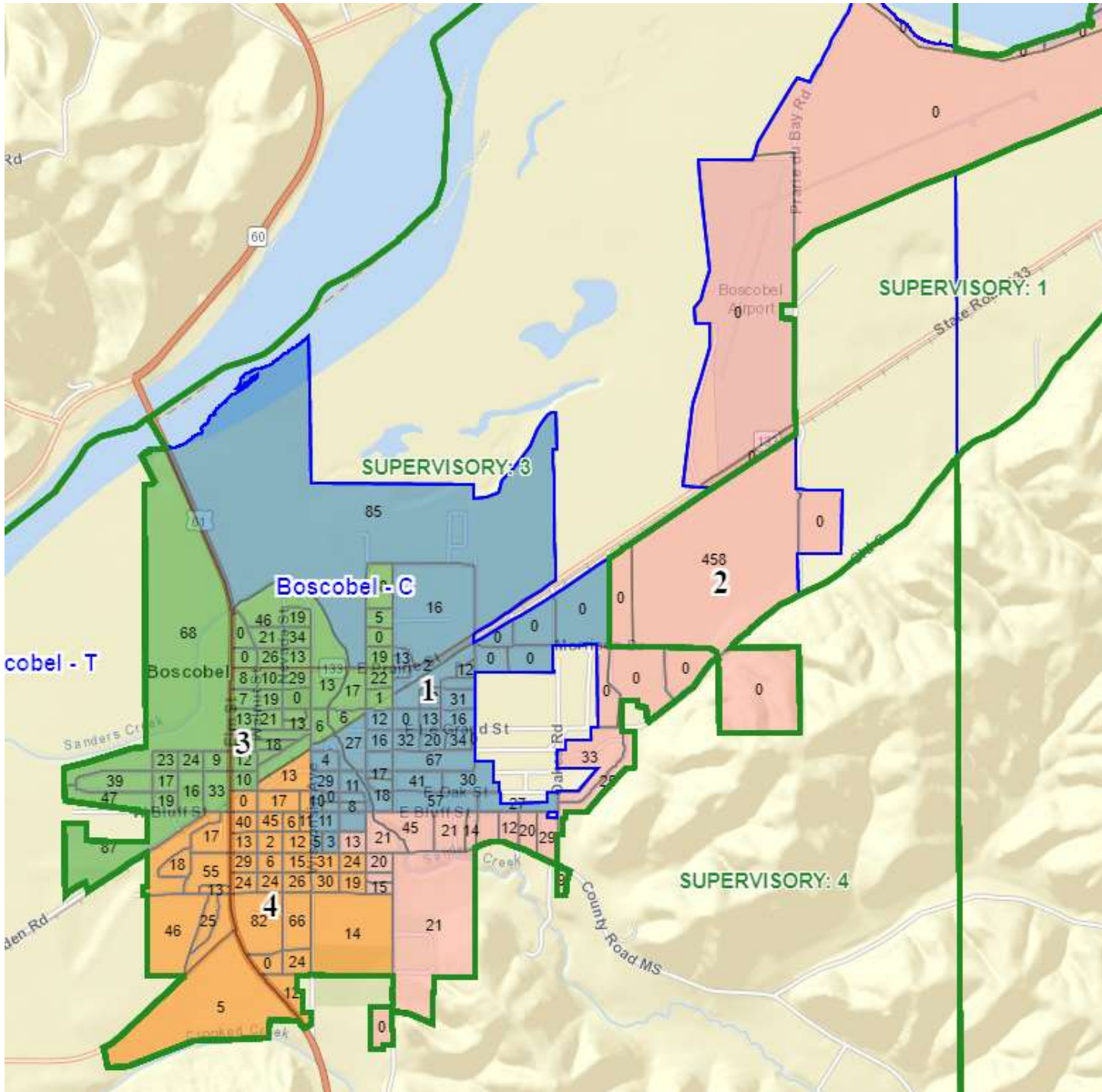
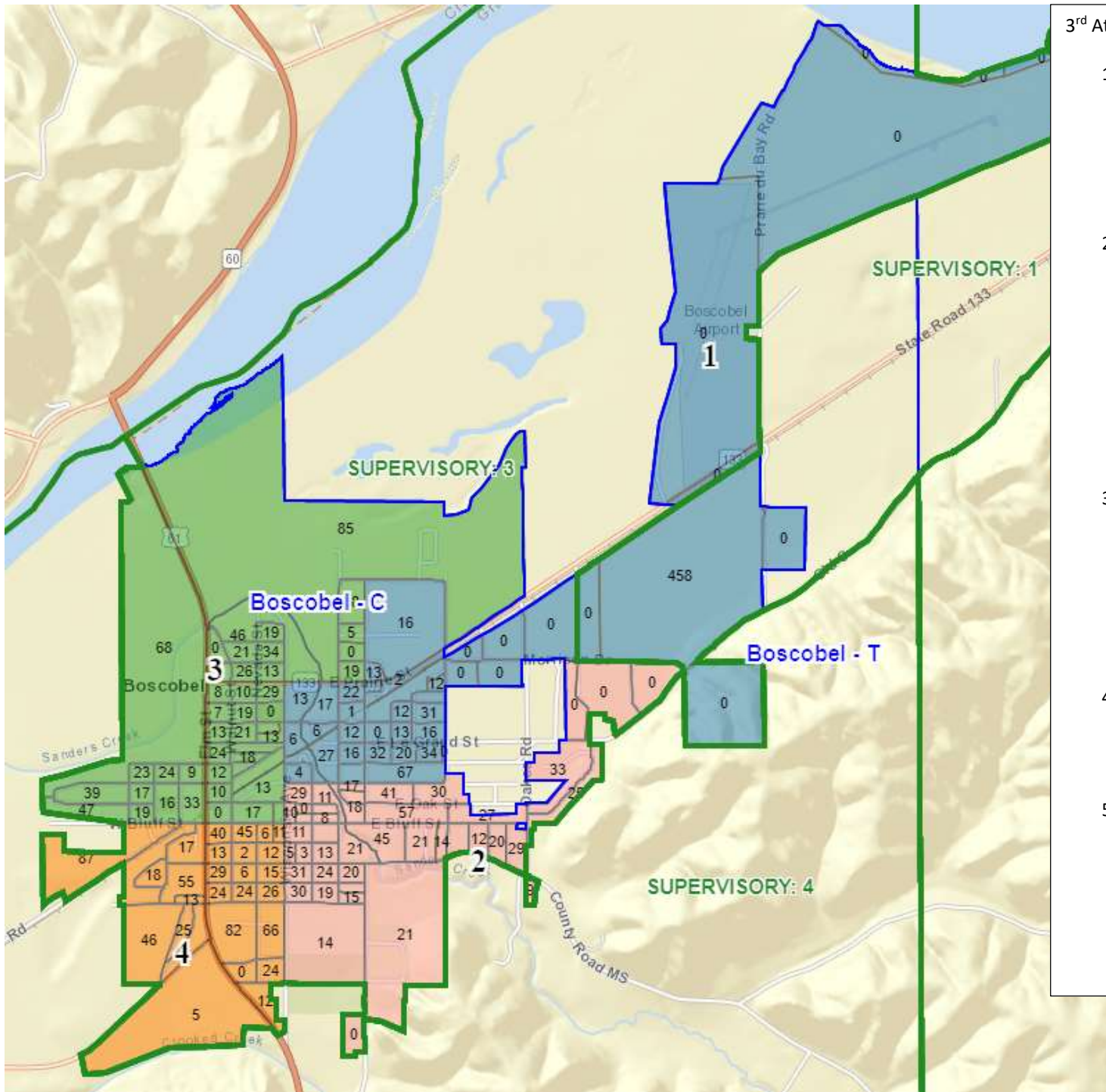


- 1<sup>st</sup> Attempt:
1. This moves 1 Alder to a different District
    - a. Ward 1- Barb & Gary (Brenda would move to this district)
    - b. Ward 2 – Stephanie & Steve
    - c. Ward 3 – Krissy
    - d. Ward 4 – Roger & Brian
  2. Population of each
    - a. Ward 1- 842 / Voting Age 667
    - b. Ward 2 – 856 / Voting Age 764 (Includes Prison – 458)
    - c. Ward 3 – 796 / Voting Age 627
    - d. Ward 4 – 792 / Voting Age 585
  3. Supervisor Districts (Reflects # of different ballots)
    - a. Ward 1- Supervisor District 3
    - b. Ward 2 – Supervisor District 1 & 3
    - c. Ward 3 – Supervisor District 3
    - d. Ward 4 – Supervisor District 3
  4. Overall Deviation is 7.79 % - Complies with requirements of less than 10%.
  5. Split is pretty much Bluff Street, Wisconsin Avenue, and Grove Street. This one will be fairly easy to describe.



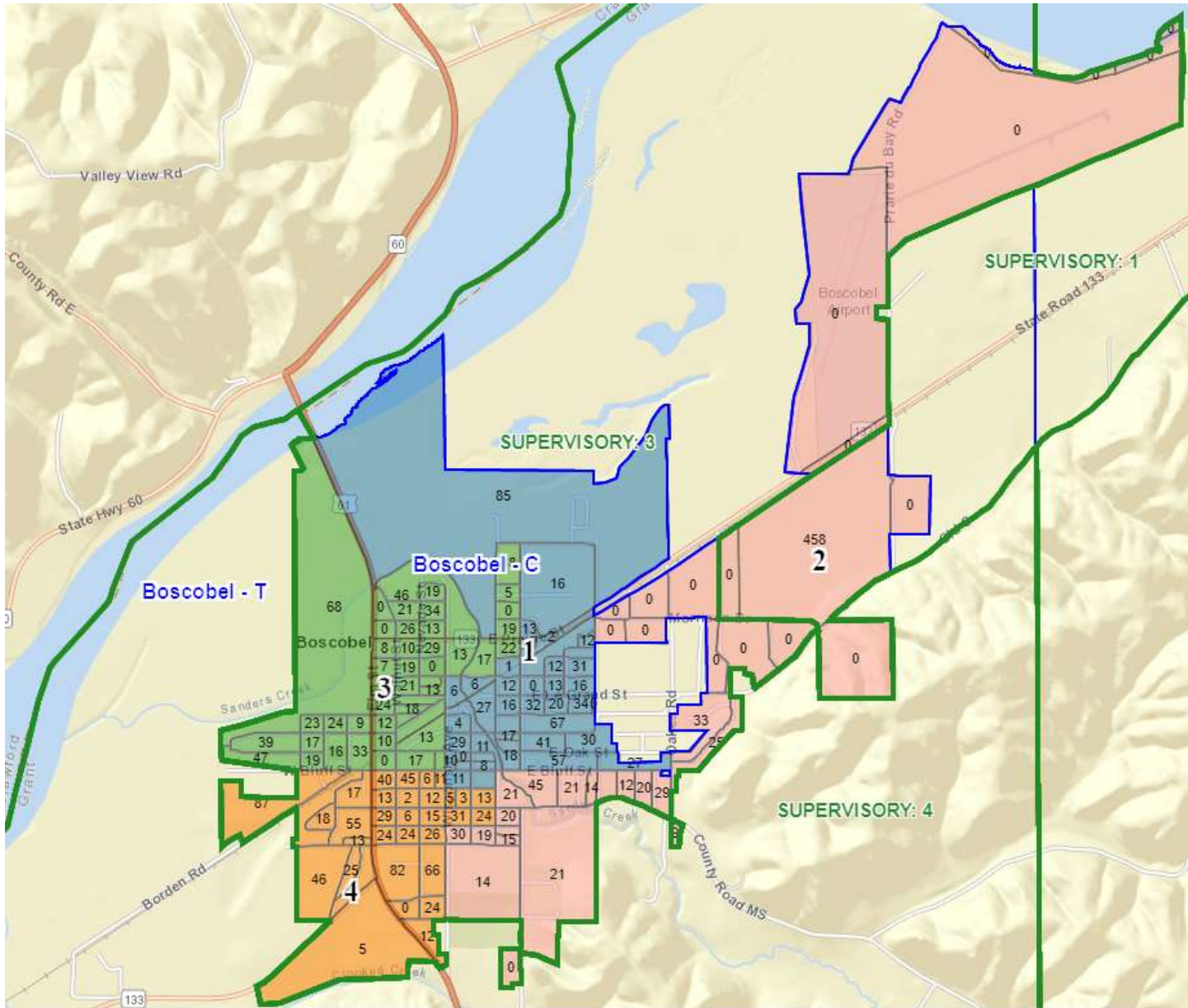
2<sup>nd</sup> Attempt: This keeps all current Alders in their same districts

- a. Ward 1- Barb & Gary
  - b. Ward 2 – Stephanie & Steve
  - c. Ward 3 – Krissy & Brenda
  - d. Ward 4 – Roger & Brian
2. Population of each
- a. Ward 1- 794 / Voting Age 632
  - b. Ward 2 – 794 / Voting Age 715 (Includes Prison – 458)
  - c. Ward 3 – 873/ Voting Age 697
  - d. Ward 4 – 825 / Voting Age 599
3. Supervisor Districts (Reflects # of different ballots)
- a. Ward 1- Supervisor District 3
  - b. Ward 2 – Supervisor District 1 & 3
  - c. Ward 3 – Supervisor District 3
  - d. Ward 4 – Supervisor District 3
4. Overall Deviation is 9.61% - Complies with requirements of less than 10%.
5. Split is not very square – may be difficult to describe.



3<sup>rd</sup> Attempt:

1. This keeps all current Alders in their same districts
  - a. Ward 1- Barb & Gary
  - b. Ward 2 – Stephanie & Steve
  - c. Ward 3 – Krissy & Brenda
  - d. Ward 4 – Roger & Brian
2. Population of each
  - a. Ward 1- 909 / Voting Age 822 (Includes Prison – 458)
  - b. Ward 2 – 777 / Voting Age 590
  - c. Ward 3 – 836 / Voting Age 646
  - d. Ward 4 – 764 / Voting Age 585
3. Supervisor Districts (Reflects # of different ballots)
  - a. Ward 1- Supervisor District 1 & 3
  - b. Ward 2 – Supervisor District 3
  - c. Ward 3 – Supervisor District 3
  - d. Ward 4 – Supervisor District 3
4. Overall Deviation is 17.64 % - Does not Comply with requirements of less than 10% - so I would have to do some more work.
5. Description of this will be manageable (so far).



4<sup>th</sup> Attempt:

1. This keeps all current Alders in their same districts
  - a. Ward 1- Barb & Gary
  - b. Ward 2 – Stephanie & Steve
  - c. Ward 3 – Krissy & Brenda
  - d. Ward 4 – Roger & Brian
2. Population of each
  - a. Ward 1- 799 / Voting Age 636
  - b. Ward 2 – 844 / Voting Age 751 (Includes Prison – 458)
  - c. Ward 3 – 803 / Voting Age 622
  - d. Ward 4 – 840 / Voting Age 634
3. Supervisor Districts (Reflects # of different ballots)
  - a. Ward 1- Supervisor District 3
  - b. Ward 2 – Supervisor District 1 & 3
  - c. Ward 3 – Supervisor District 3
  - d. Ward 4 – Supervisor District 3
4. Overall Deviation is 5.47 % - Complies with requirements of less than 10%.
5. Will be a little difficult to describe